



***Protecting & Defending Public Education in
South Carolina***

Our Mission

The South Carolina Education Association's mission is to empower its members to promote quality public schools, strengthen the profession of teaching, and improve the well-being of members.

3 Great Associations Working For You

National Education Association (NEA)

- Gives you unmatched professional resources, in person & online
- Gives you big discounts on products & services you need.
- Protects you with professional labor attorneys & liability insurance

nea

3 Great Associations Working For You

The South Carolina Education Association (The SCEA)

- Gives you big local area discounts
- Protects you with full-time staff advocates and online resources
- Offers you professional development & leadership training
- Protects the profession with full-time professional lobbying



3 Great Associations Working For You

Your Local Association

...your voice at the district, board, and school level.
They work to bring about needed focus and change.

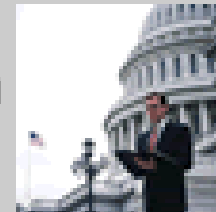
What We Do For You

- **Jackie B. Hicks** – President Hicks represents members statewide with school administrators and political leaders.
- **Roger Smith** – Roger is the Executive Director of The SCEA and oversees the administration of the association.

What We Do For You

- **UniServ Director** – A UniServ Director is assigned to you as your advocate and representative if your employment becomes jeopardized or if you just need assistance. She/he is your liaison to all services and benefits.
- **Joanie Lawson** - Joanie is our lobbyist. She spends a great deal of time at the State House talking to legislators about educator needs.

Legislative Action
Center

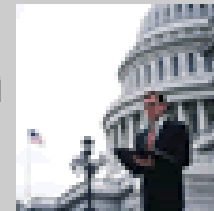


What We Do For You

Headquarters Staff – Our headquarters office is located at 421 Zimalcrest Drive, Columbia.

At our headquarters, you will find our dedicated administrative personnel who keep the association moving! They process your membership and see that things run smoothly.

Legislative Action
Center



Legal Services and Liability Insurance

The Legal Services benefit provides an attorney for serious employment situations. Our attorneys specialize in education and employment law. A simple case can cost thousands of dollars. You are not required to find your own attorney.

Legal Services and Liability Insurance

If you are sued, this insurance covers the monetary damages you must pay if the parent prevails.

Without this coverage, you could face financial devastation. Your school district does not provide this coverage.

One-on-One Advocate

The SCEA and NEA, *through joint funding*, provide full time staff advocates (UniServ Directors) who represent you when personnel action is taken or you have a work-related issue.

Is it possible that you don't not need these benefits and services, and could go it alone? Maybe, but why risk it?

Member Advocacy Center

The SCEA opened its Member Advocacy Center on April 1, 2010. The Center provides assistance with work related issues, job coaching, and work conflict. The Member Advocacy Center site is located at <http://thescea.groupsite.com>. There, members have access to information and resources related to education law and work issues.

Janet Stein oversees the MAC and can be reached at help@thescea.org.

Member Advocacy Center

<http://thescea.groupsites.com>

The SCEA Member Advocacy Center

“Protecting and Defending”



HOME

COMMUNICATE ▾

SHARE ▾

NETWORK ▾

FILE CABINET

MORE ▾

MANAGER ▾

MY SETTINGS ▾

HELP ▾

Testimonials - Help us build the section by sending us yours!

 Edit 

"Thank you again for your support, for driving such a long way and being my back-up. I am sure the advice I received from you helped get me to where I want to be. Being a member of SCEA was an asset, not only for my emotional being, but I believe my concerns were more seriously considered because I did have representation. Thank you so much again."

- KT, Beaufort, July 09, 2010

If you are not a member of The SCEA and this site, you will not be able to see the graphics, clip art and pictures on this HOME page. Once you join the site, you will be able to see all site content.

 Edit 

Recent personnel actions across the state have included some disturbing actions on the part of districts. Here are some:

When investigating a situation, the district sought out statements and documentation from prior principals at prior schools and used that material instead of the official personnel file at the district office. This information had never been placed in the teacher's official personnel file.

Complaints against the teacher by her/his own colleagues were used as part of the rationale to fire a teacher. Teachers should rethink making complaints against one another to administration because it is obvious these complaints can cause someone to lose their job and career.

A principal asked a parapro and other teachers to watch a teacher and keep notes and turn them in daily. This was

Everything ▾

SEARCH

Go

Profile Completeness




Janet Stein

Professional Profile is 85% Complete.

85%

 Add Affiliations

+ 10%

 Add Objectives

+ 5%



Add additional storage capacity for sharing documents, photos and more.

[Learn More »](#)

 Edit 

School Climate & Professionalism

This session addresses harassment and hostile work environments

Technology Traps

This session focuses on digital citizenship and social networking

Money

Everyday Living

Health & Wellness

Professional Resources

Travel & Leisure

Caring for your pet is easier than ever with the new NEA Pet Insurance Program

Rates start as low as \$19 per month

Membership doesn't cost; it pays!



Enhance your skills and advance your career with courses from the NEA Academy...

Home Page | NEA Member Benefits

Print | Email | A+ A- | Facebook | Twitter | LinkedIn | More

Member Benefits

Quick Links

Win a Back to School Shopping Spree



Enter to win 1 of 5 \$250 Spiegel gift cards! No purchase necessary.

More Money Channel

NEA MB Member Assistance

Helpful services for members during tough economic times



NEA Member Benefits is working with our benefit partners to negotiate special services and concessions for members facing tough economic times. Learn about the special programs and services that may be available to you. [more](#)

My Member Benefits



NEA Group Term Life Insurance
Exclusive NEA rates help you protect your loved ones.

More Everyday Living Channel

Free and Frugal E-Book Finds

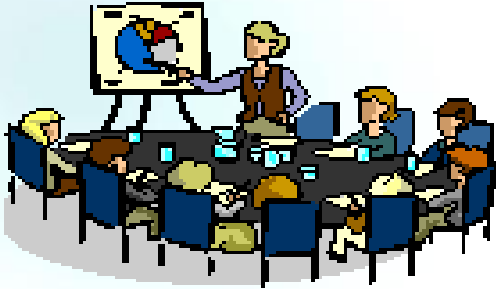
By Michael Sweet



Curling up with a good book is a great way to relax, and

Instant Rate Quote
NEA Level Premium Term Life

Your Age Select



Special Programs of Interest & Resources:

Professional Development Workshops

National Board, Praxis, I Can Do It and more...

Assistance with local lobbying

Read Across America

Safe and Healthy Schools Network

New Teacher Handbooks and Support



TM & © 1997 Dr. Seuss Enterprises, L.P. and NEA. Cat in the Hat image TM & © 1957 Dr. Seuss Enterprises, L.P. All Rights Reserved.



The SCEA Needs You

- On the inside, you are part of an association dedicated to the education profession.
- On the inside, you are part of a network of educators working together to address the needs of teachers.
- With every new member, we become stronger in our efforts to help you.

**The SCEA invites you to
join your professional
association**



The SCEA Student Program



for college students entering the
teaching profession

NEA/SCEA Benefits for Student Members

- Special low membership enrollment rate
- A credit card available with a low APR and minimum annual fee
- A home buying mortgage plan and low down payment options
- An early investment plan for retirement

In addition, student members enjoy the same level of benefits and services as all members.

NEA/SCEA student members have access to ...

- Cutting edge research
- Publications: NEA Today, Tomorrows Teachers
- Information and assistance regarding professional certification requirements
- Workshops and conferences
- Leadership skills training
- Guidance for teaching today's diverse student populations
- Opportunities for net-working for college students entering the teaching profession

How to Join

- Enroll through The SCEA Representative in your school.
- Enroll online at <http://www.thescea.org>
- Call us at 800-422-7232.

**The SCEA wishes for
you a safe, healthy, and
successful year.**

